



School Lane, Barton, CB23 7BD

CHEFFINS

School Lane

Barton,
CB23 7BD

A rather special opportunity to acquire a charming and most attractive detached cottage of immense character with its own unique ambiance and many special features. The property has been sympathetically improved, altered and extended, providing well proportioned and versatile living accommodation. It also has the benefit of a driveway/off street parking to side with an electric vehicle charger. There is also a delightful enclosed rear garden and a detached studio/office.

4 2 2

Guide Price £950,000





LOCATION

The property occupies a prominent position in a picturesque lane right in the heart of the village and next door to the inn, and just a short walk to the fine church, village shop/post office and primary school. The highly sought after and most desirable village of Barton has further amenities including shops at the Burwash Manor Estate which also includes an award winning farm shop and cafe. The village is also conveniently placed just three miles west of the university City of Cambridge and one mile from the nearest M11 motorway access point at Junction 12.

ENTRANCE DOOR

leading through to:

OPEN PLAN SITTING/DINING ROOM

A wonderfully characterful and welcoming reception space featuring an attractive brick fireplace (currently sealed), exposed timbers and beams and natural wood-style flooring. Sealed unit double glazed windows to the front and side aspects fitted with shutters provide excellent natural light and further enhance the charm and ambiance of the room. The accommodation flows seamlessly through to the kitchen and rear hall creating a superb arrangement for both modern family living and entertaining.

KITCHEN

Forming an integral part of the living space and comprehensively fitted with an extensive range of bespoke cabinetry incorporating a twin bowl butler sink with mixer taps and cupboards below. Stylish work surfaces extend to either side with further cupboards and drawers beneath together with pull-out bin storage, integrated Bosch ovens, Bosch dishwasher and Samsung four-ring induction hob with extractor hood above. There is also space and plumbing for a washing machine and tumble dryer together with space for an upright fridge/freezer. Further features include a breakfast bar, plate rack, open shelving and built-in cupboards housing heating controls. Sliding sash windows to the side aspect and further windows to the front and rear aspects provide excellent natural light throughout.

PRINCIPAL RECEPTION ROOM

A particularly atmospheric and elegant reception room with attractive sliding sash windows to the front and side aspects together with two full-height sealed unit double glazed windows overlooking and opening onto the terrace and gardens beyond. A central open fireplace with raised hearth and timber mantel provides an attractive focal point, complemented by natural wood-style flooring.

REAR HALL

Providing a practical area for coats and shoes with staircase rising to the first floor and glazed door leading directly onto the rear terrace and gardens.

CLOAKROOM

With low level w.c. and wash hand basin with tiled splashback.

FIRST FLOOR**LANDING**

With decorative panelling, windows to the side and rear aspects and trap door access to roof space.

BEDROOM 2

With windows to the front aspect together with an attractive cast iron fire grate with timber surround and mantel.

BEDROOM 3

With exposed timbers, radiator and windows to the front aspect.

BEDROOM 4

With sealed unit double glazed windows to the front aspect and radiator.

FAMILY BATHROOM

Beautifully appointed and fitted with a freestanding cast iron bath on claw and ball feet together with a vanity style wash hand basin with mixer taps and tiled splashback, low level w.c. and tiled shower cubicle with glazed enclosure incorporating both a fixed head shower and handheld attachment. Further features include ceramic tiled flooring, wall mounted heated towel rail/radiator and a double glazed Velux window to the side aspect.

INNER LANDING

Reached via a short flight of steps and incorporating a shelved linen cupboard together with a sliding sash window to the side aspect.

PRINCIPAL BEDROOM

A spacious and beautifully appointed room enjoying windows to the side aspect fitted with wooden shutters together with two further windows overlooking the delightful rear gardens. The room incorporates fitted work surfaces and dressing table with drawers beneath together with extensive built-in wardrobes and shelved storage cupboards with sliding doors.

EN SUITE SHOWER ROOM

Fitted with a tiled shower cubicle with glazed screen and fixed high level shower unit, vanity style wash hand basin with mixer taps and tiled splashback, low level w.c., wall mounted heated towel rail/radiator and sealed unit double glazed Velux window to the side aspect.

OUTSIDE

To the front of the property there is a particularly attractive enclosed garden area laid principally to lawn with a wide variety of mature shrubs and well-stocked borders around. Tiled pathways lead to the front entrance door and gated access to either side of the property provides access through to the rear gardens.

To one side of the cottage there is a cobbled driveway providing off-road parking together with an electric vehicle charging point. On the opposite side, gated access leads through to a charming courtyard style area with covered bike and bin store, timber garden store and paved pathways leading to a terrace adjoining the cottage. A discreet recessed area houses the oil storage tank.

The delightful and generous rear gardens are a particularly special feature of the property and enjoy a high degree of privacy and seclusion. The gardens are principally laid to lawn with a wonderful variety of mature shrubs, hedgerows, trees and well-stocked borders around. A rose-covered arbour leads through to a further secluded garden area with an elevated timber decked seating area ideally suited for al fresco dining and entertaining.

DETACHED STUDIO/HOME OFFICE

A useful and versatile detached building fitted with light and power, natural wood-style flooring and windows to the front, side and rear aspects. To the front of the studio is a timber decked seating area together with a garden storage shed and additional lean-to store beyond.



Energy Efficiency Rating		Current	Potential
<i>Very energy efficient - lower running costs</i>			
(92 plus) A			
(81-91) B			
(69-80) C			
(55-68) D			
(39-54) E			
(21-38) F		38	49
(1-20) G			
<i>Not energy efficient - higher running costs</i>			
England & Wales	EU Directive 2002/91/EC		



Guide Price £950,000
 Tenure - Freehold
 Council Tax Band - E
 Local Authority - South Cambridgeshire
 District Council

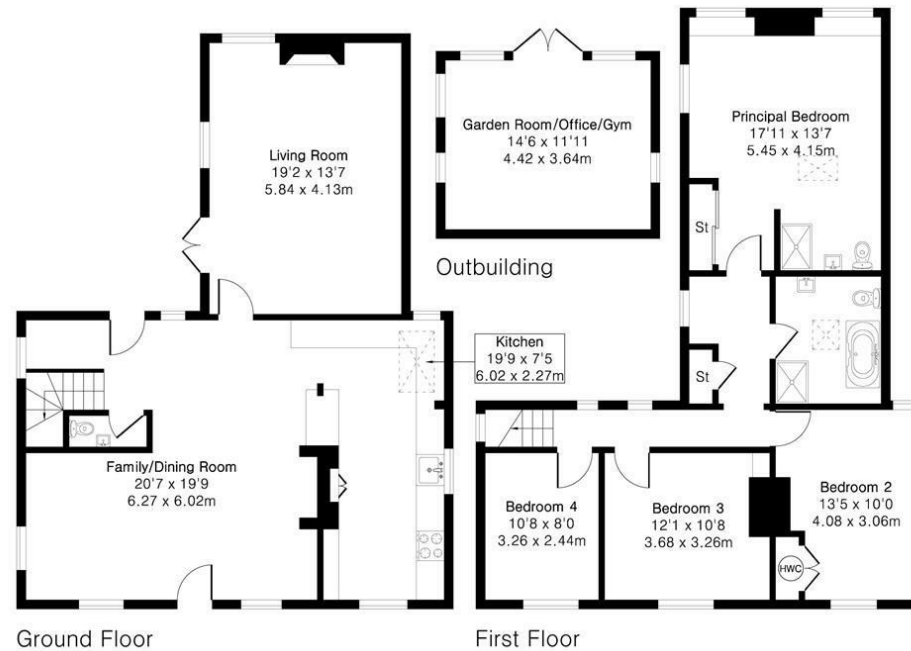


**Approximate Gross Internal Area 1640 sq ft - 153 sq m
(Excluding Outbuilding)**

Ground Floor Area 849 sq ft – 79 sq m

First Floor Area 791 sq ft – 74 sq m

Outbuilding Area 173 sq ft – 16 sq m



Floor plan produced in accordance with RICS Property Measurement 2nd Edition. Although Pink Plan Ltd ensures the highest level of accuracy, measurements of doors, windows and rooms are approximate and no responsibility is taken for error, omission or misstatement. These plans are for representation purposes only and no guarantee is given on the total square footage of the property within this plan. The figure icon is for initial guidance only and should not be relied on as a basis of valuation.

CHEFFINS

[For more information on this property please refer to the Material Information Brochure on our website.](#)

Agents Note: Stamp Duty Land Tax is an additional cost that you must consider. Rates vary according to the type of transaction and your circumstances. Therefore please familiarise yourself with the rates applicable using this link: <https://www.gov.uk/stamp-duty-land-tax/residential-property-rates>.



Clifton House 1-2 Clifton Road, Cambridge, CB1 7EA | 01223 214214 | cheffins.co.uk

IMPORTANT: we would like to inform prospective purchasers that these sales particulars have been prepared as a general guide only. A detailed survey has not been carried out, nor the services, appliances and fittings tested. Room sizes should not be relied upon for furnishing purposes and are approximate. If floor plans are included, they are for guidance only and illustration purposes only and may not be to scale. If there are any important matters likely to affect your decision to buy, please contact us before viewing the property.

CHEFFINS